

METAREVERSE



METAREVERSE

VIRTUAL INVERSE UNIVERSE

Death and Rebirth – To the very end of the death for rebirth



The series “METAREVERSE” is the debut collection of works by C<T, a Vietnamese artist who recently discovered her true calling after a near-death experience.

The series explores her personal journey of self-discovery and empowerment through the mediums of visual art, poetry, and song. As she began to create, she found that her art was not limited to any particular material or style, but instead flowed freely from her subconscious, imagination, and emotions. She explains that her art-making process is a way of shedding the years of self-suppression that resulted from her previous career in finance and business, and reversing the path that led her away from her true identity as an artist. C<T recounts a near-death experience that occurred two days before her 32nd birthday, which served as a revelation of her true purpose and ignited a burning desire to create art.

“METAREVERSE” is a play on the term “METAVERSE” and represents an intentional rejection of the digital world, in favor of meaningful experiences in the real world. The “METAREVERSE” series includes 20 drawings and 22 large lacquer paintings, which the artist describes as the ideal and emotional expressions of her concepts, respectively. Her drawings, created with ballpoint pen on paper, are characterized by fluid lines and limitless imaginative forms that flow together in perfect harmony. C<T draws in a state she can best describe as bliss, letting the lines flow freely without hesitation or preconception, and views her art as a reflection of life itself - always flowing in the present moment.

The paintings, on the other hand, are the emotional expression of her concepts, and showcase her mastery of color and composition.

The lacquer paintings are particularly striking, as the medium adds a sense of depth and luminosity to her work. Each painting tells a story and evokes a different emotion, making the viewer feel a deep connection to the artist's personal journey. Her works are not only visually unique, but also carry a powerful message about the importance of self-discovery and the rejection of a digital world that lacks true meaning and connection. Through her art, she encourages us to break free from the constraints of society and find our own path, and reconnect with the things that are truly meaningful in life.

Moreover, her works serve as a powerful reminder of the fragility of life and the importance of cherishing the relationships that matter most. Through her art, she encourages us to be present in the moment and to appreciate the beauty of the world around us. Urging us to think critically about the role of technology in our lives and to be mindful of how it shapes our perceptions and values.

Overall, “METAREVERSE” is a striking and intimate representation of the artist's deeply personal voyage of self-discovery and empowerment, and acts as a powerful reminder that true fulfillment and purpose can only be attained through embracing one's real self, and rejecting the superficiality of the digital world.

The “METAREVERSE” series is not just a showcase of artistic talents, but an invitation to discover and live a meaningful life.





EXPLANATION I LEAVE IT TO YOU

ARTIST DAO ANH KHANH

As the father of a talented artist, I have observed my daughter’s sudden and unexpected transformation with a mixture of wonder and concern. My daughter, Dao Anh Tho, or “C<T” had never considered a career in the arts, and had instead devoted her time and energy to studying in the United States and Australia, and working in finance. However, following a profound near-death experience, C<T made the impulsive decision to abandon her past and pursue a career as an artist.

As an experienced artist myself, I couldn’t help but worry about my child’s sudden shift in direction. I questioned whether she was truly prepared for the precarious and uncertain world of the arts, especially given her lack of passion for finance and business. But my doubts were quickly put to rest when C<T began to share her artworks with me. Her drawings, which at first seemed strange and surreal, were in fact the product of a highly developed artistic vision. Within a month, C<T had reached an artistic level that far exceeded my own, despite my many years of experience.

I watched with amazement as C<T poured herself into her work, creating a stunning collection of lacquer paintings and imaginative drawings, as well as experimenting with other mediums such as poetry, music, and film. Her work was a fusion of logic and metaphysics, and her concepts expanded into poetry, music, architectural components, and more.

As a father, it is a privilege to witness my child’s growth and development as an artist. I can only observe and enjoy, yet to have time for any analysis. I am proud of her achievements and cannot wait to see what she will create next.

Q & A

WHAT FACTORS CONTRIBUTED TO C<T’S SUDDEN ARTISTIC MUTATION?

As I ponder the various factors that may have contributed to C<T’s sudden and extraordinary transformation as an artist, I cannot help but consider the influence of her cultural background, artistic upbringing, and experiences in various countries such as the United States, Australia, Japan, and China. Additionally, the panic and shock of a near-death experience may have sparked a new energy and instinct to survive within her. However, in my estimation, these factors alone would not be sufficient to explain her rapid transformation.

Furthermore, I find it hard to believe that her sudden mutation could be attributed to lack of preparation or training in spirit, actions, or skills. Thus, I am inclined to believe that there must be a higher spiritual influence at play in C<T’s sudden mutation. This is particularly noteworthy as C<T is a deeply spiritual person, and her faith in God and her baptism a year ago may have played a key role in her mutation.

WHAT LANGUAGES DOES C<T USE TO EXPRESS HERSELF THROUGH PAINTING, MUSIC, OR POETRY AND WHERE DO THEY COME FROM?

In my opinion, C<T’s artistic expression draws upon a wide range of influences, from the most mundane aspects of everyday life to the highest realms of philosophy, science, folklore, and modernity. She seamlessly integrates these influences and projects them through her artwork, which encompasses various mediums such as visual art, music, and literature.



Her approach is characterized by extra-ideal thinking, coexistence, surrealism, and an unwavering sense of freedom. Aesthetics serves as a driving force in her work, and she approaches her art with absolute faith in herself and her spirituality.

WHY DOES C<T USE MULTIPLE ARTISTIC LANGUAGES (PAINTING, MUSIC, SCULPTURE, POETRY) TO CREATE HER WORK?

It may be that the current era calls for individuals to be proficient in a variety of human cultures and artistic languages. Each language possesses its own unique diversity and strengths, allowing for a comprehensive and holistic approach to art.

This allows for a greater scope and flexibility in an artist’s work, satisfying her desires and imagination. It is possible that this trend of multidisciplinary approach will continue to be prevalent in the future of art. Similarly, as we strive to explore other planets, it is crucial to have a diverse range of knowledge and skill-sets in various disciplines of science to embark on such a journey.

WHAT IS THE MOTIVATION BEHIND C<T’S FIRST ART EXHIBITION, “METAREVERSE,” WHICH APPEARS TO COUNTER THE TREND OF DIGITIZATION AND THE REPLACEMENT OF TRADITIONAL ART FORMS?

In my view, the human desire for discovery is a reflection of ultimate wisdom. It encompasses the exploration of both external and internal worlds, and the ability to move forward or backward in time. These experiences will all be recorded in human history. The beauty of it all is that we have the freedom to choose the world that aligns with our thoughts and feelings.

In the case of C<T, I believe that her art is a reflection of the human experience, encoded in various artistic languages. She appreciates the tangible world and is able to touch, hear, see, and imagine it. However, she is not content with being reduced to a mere number or digitization. I have faith that those who appreciate C<T’s art will feel a sense of warmth, aliveness, and humanity through it. And as long as humanity persists, her art will continue to endure. As I delve deeper into this abnormal phenomenon, I find myself unable to fully explain it. The opportunity to uncover the truth is open to all. As C<T’s father and a colleague, I encourage and believe that she will lead a fulfilled and joyful life.









18/08/2021

REBORN & REGENERATION

One day after my 32nd birthday, I was born a different person
and began to take the first brushstrokes
of my artistic journey.

(ENG)

REFLECTIVE DIMENSION

REFLECTIVE DIMENSION - 15.09.2021
LACQUER 168 X120 CM

"REFLECTIVE DIMENSION" was the first drawing that C&T turned into a painting, marking the beginning of her artistic journey.

After a month of contemplation following a near-death experience and a newfound desire to become an artist, she examined the different stages and personas of her adult life. The painting portrays four distinct stages of her life, represented by four different egos of a woman. From her restless youth filled with adventure and escapades, to her older years where she sought a place of solace and reflection. She looked back at her life and let her emotions flow into her art as a form of healing. The painting features the silhouette of Kieu, a famous woman in Vietnamese literature known for her charm and compassion, as a symbol of self-reflection.

Kieu's sparkling gaze illuminates like a thousand dewdrops
In her youth, she pursued a dream of worldly grandeur
As a woman, she longed for her homeland's embrace
After much wandering and adventure, her wings grew weary
At the light of dusk, she hastened to find a place of repose
Life, like dust carried by the winds and clouds
Why should I fret over transient affairs?

REFLECTIVE DIMENSION
Music & Poem composed by C&T



(ENG)

WIFE BEATER

WIFE BEATER - 29.09.2021
LACQUER 168 X120 CM

As an integral aspect of the journey to self-love, it is necessary to address unhealed wounds and confront fears. "Wife Beater" presents a striking contrast to the first painting in the series, which evokes a sense of fluidity and serenity. The painting is a tumultuous eruption of colors, with striking visual imagery that evokes a palpable sense of pain and trauma. "Wife Beater" is an provocative representation of the artist's own past, where she lost herself and her freedom to domestic abuse.

Without confronting the deepest pain of our own past, we risk letting it grow in hopelessness and denying our own power. This work serves as a means of accepting C&T's past wounds and depicting the monster that has haunted her. The final artwork was painted with the artist's own blood and tears, serving as a testament to the reality of domestic violence and the artist's empathy for herself and other women facing similar struggles. It is considered by C&T to be the most powerful piece in the series - a resolute way of reclaiming her own power and identity.



(ENG)

KIEU’S LOST SOUL

KIEU'S LOST SOUL - 29.09.2021
LACQUER 168X120 CM

In the first two paintings, we can still see remnants of C<T's former life, but "Kieu's lost soul" represents a completely reversed, spinning, and inverted universe. C<T opened this universe through a song, discovering for the first time a voice and a creative mind within herself. The creation of the song "Kieu's lost soul" was a sentimental moment for C<T, akin to two planets colliding in her world and leaving her fragmented, but also unearthing a long-dormant desire.

This song and the subsequent painting, "Kieu Lac Hon," marked the beginning of C<T's journey of self-creation and re-creation. Guided by music, C<T entered a world of magic and beauty, following in Kieu's footsteps on the water through the beautiful jungle submerged under the water. The world of dreams and fantastical surrealism collided and emerged more splendid than the artist's wildest imagination.

Tears cascade down Kieu's cheeks
Drops of love sweetening my heart in this desolate land
Her breath a symphony of longing,
Kieu's heels take flight into the dream
She begins to sing
Golden afternoon bathes in the rays of sunlight
The stream's melody akin to music of the moon
Kieu soars into the wind of sand

KIEU'S LOST SOUL
Music & Poem composed by C<T



(ENG)

FLOWER CHILD

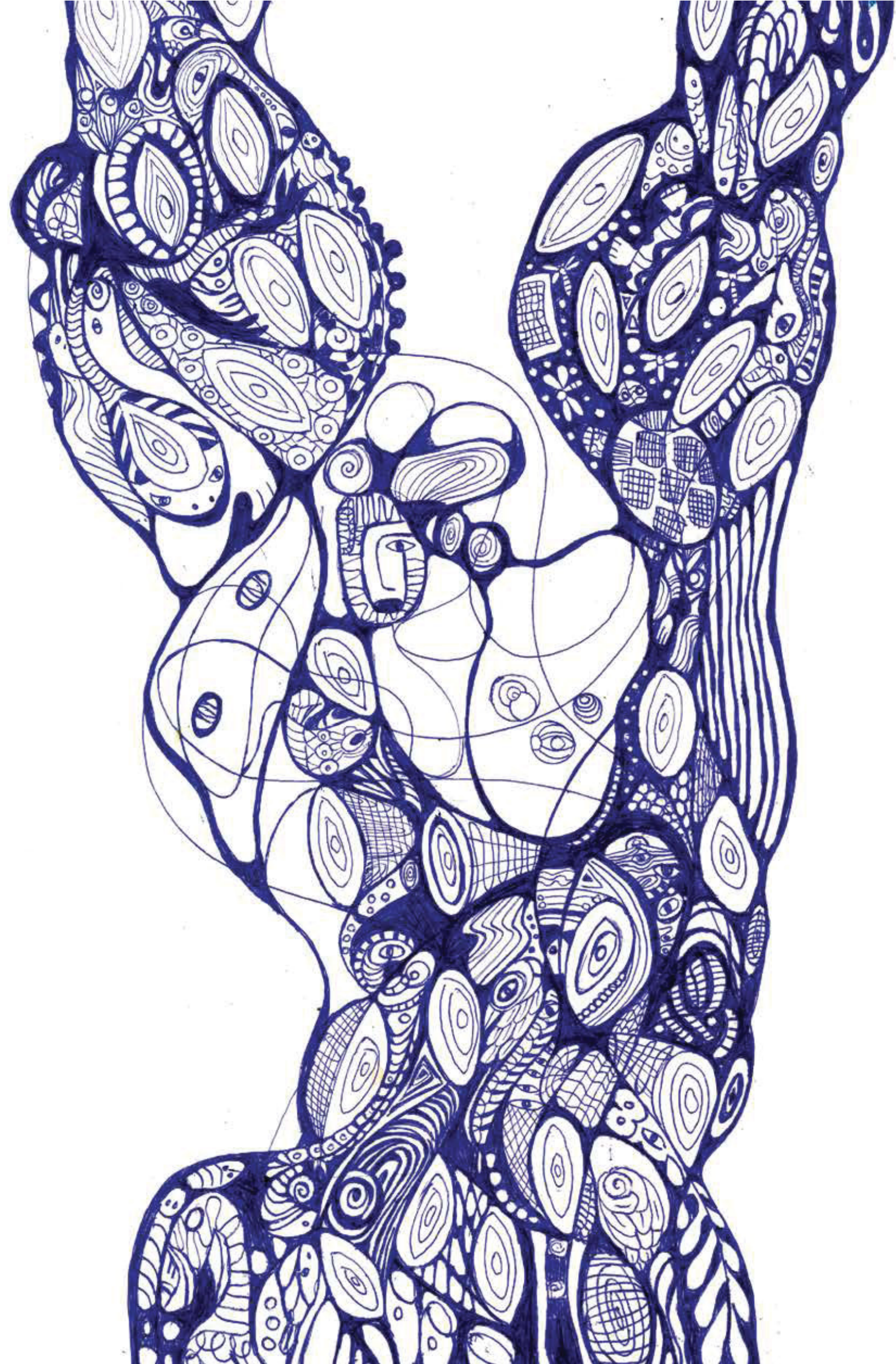
FLOWER CHILD - 02.10.2021
LACQUER 168X120 CM

C&T experienced a profound connection to nature when she found her true emotions. Sensing the subtle vibrations that have always been present, she found extraordinary inspiration in the simple things that were right in front of her.

I am a butterfly soaring amidst the azure expanse
A blade of grass that dances to the rhythm of the wind
A bird that soars endlessly on wings of freedom
A fish that frolics in the tranquil eve
I am the radiance that floods the boundless ocean
A sea of unending currents, pulsing with life
I am one with nature, a child of the earth.

She felt the energy emanating from the grass, the flowers, the soil, the water, the birds and all that surrounded her, realizing the beauty of the miraculous life that exists in everything. This newfound connection is reflected in her art, as she paints powerful and life-affirming pieces, such as "Flower Child".

A painting with an eagle-wing layout, wings spread, full of vitality, capturing the extraordinary flow of nature. Her creations, from poetry to painting, are infused with the brilliant color of trees, Mother Earth, the sea, and the majesty of nature. She uses the phrase "I am" for all things, serving as a powerful guiding principle. Each cell proliferates, expands, breathes, and spreads love and life in small vibrations. Through this process, C&T discovers herself in the present moment, becoming one with all complex life forms.



(ENG)

DUST JOYOUSLY WANDERING

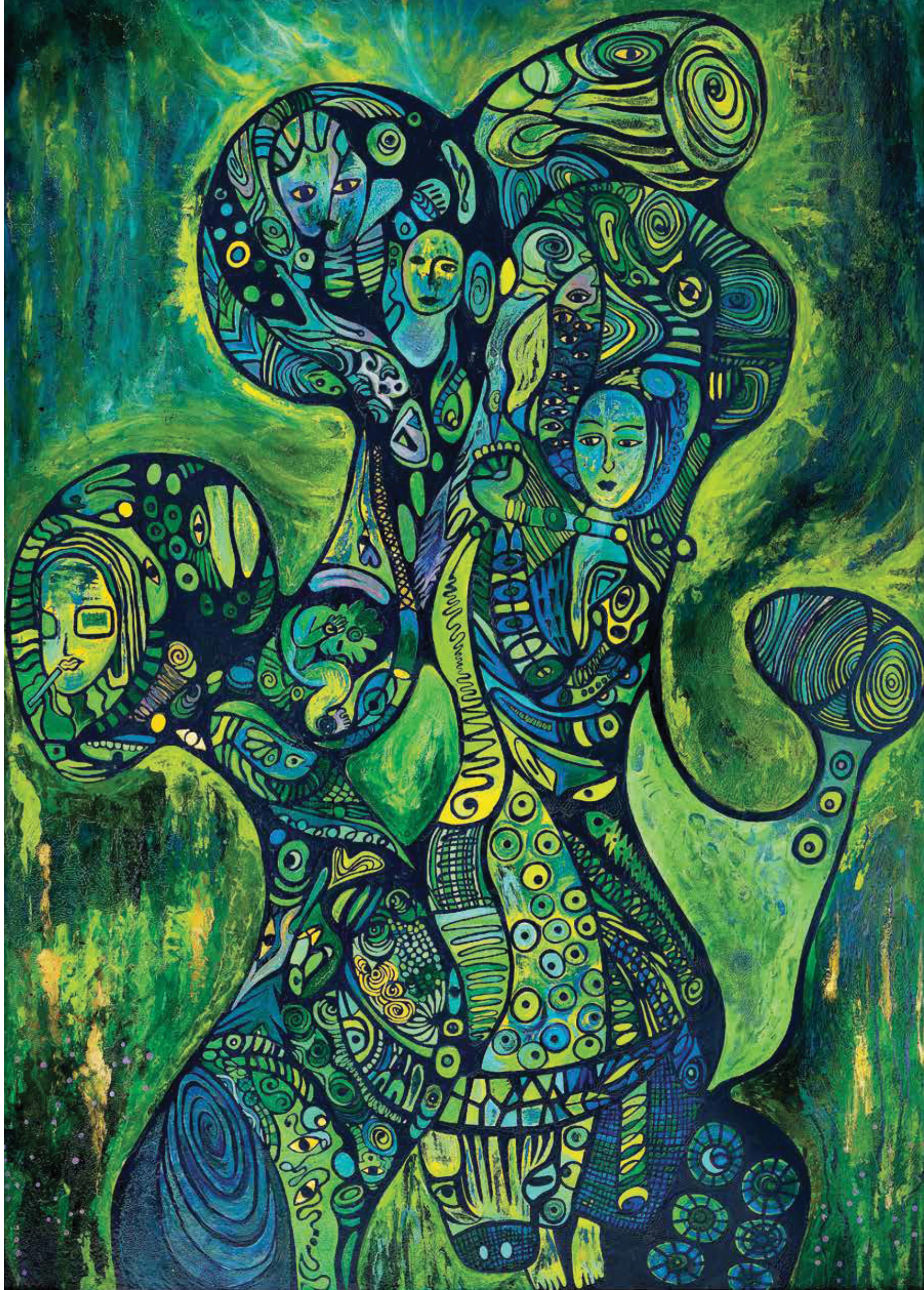
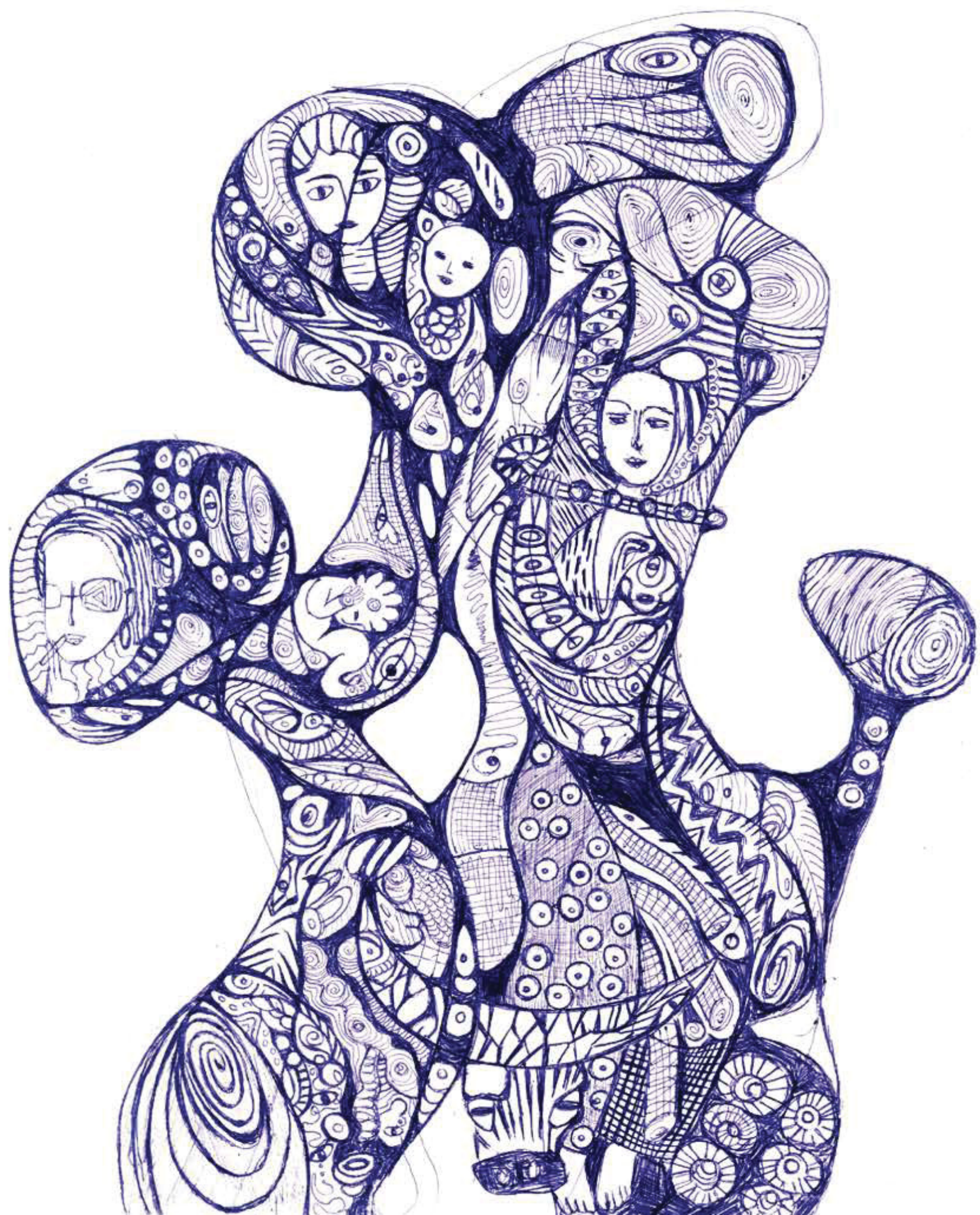
DUST JOYOUSLY WANDERING - 04.10.2021
LACQUER 168 X120 CM

Life is ever-evolving and constantly shifting, and so too is C&T's journey. As we delve deeper into her world, we journey through the various vibrations and harmonies of nature, and witness her different transformations, experiencing the full range of human emotions and reflecting on the origins of life. C&T journeys back through time, revisiting the different stages of life - from newborn infancy to childhood, and traversing the cycle of birth, aging, illness, and death, ultimately dissolving into dust.

This period of contemplation was not by chance, but rather brought about by the isolation of the COVID-19 pandemic, which gave C&T ample time to reflect and rediscover herself, realizing that the present is nothing more than a black hole, composed of ones and zeroes. Everything exists only to eventually be reduced to dust, and she comes to accept that one day she too will resolve to dust, and become one with the earth.

I am the fleeting dust that dances on the winds,
A moment of stillness draws me into a reverie.
The ocean echoes with the pulse of life,
The song of the fish transports me to the ancient woods.
I behold the avian messenger, its tears falling like rain,
Memories from the past permeate
from the womb to the dawn of existence,
The present is a void of ones and zeroes, forever fleeting.

DUST JOYOUSLY WANDERING
Music & Poem composed by C&T

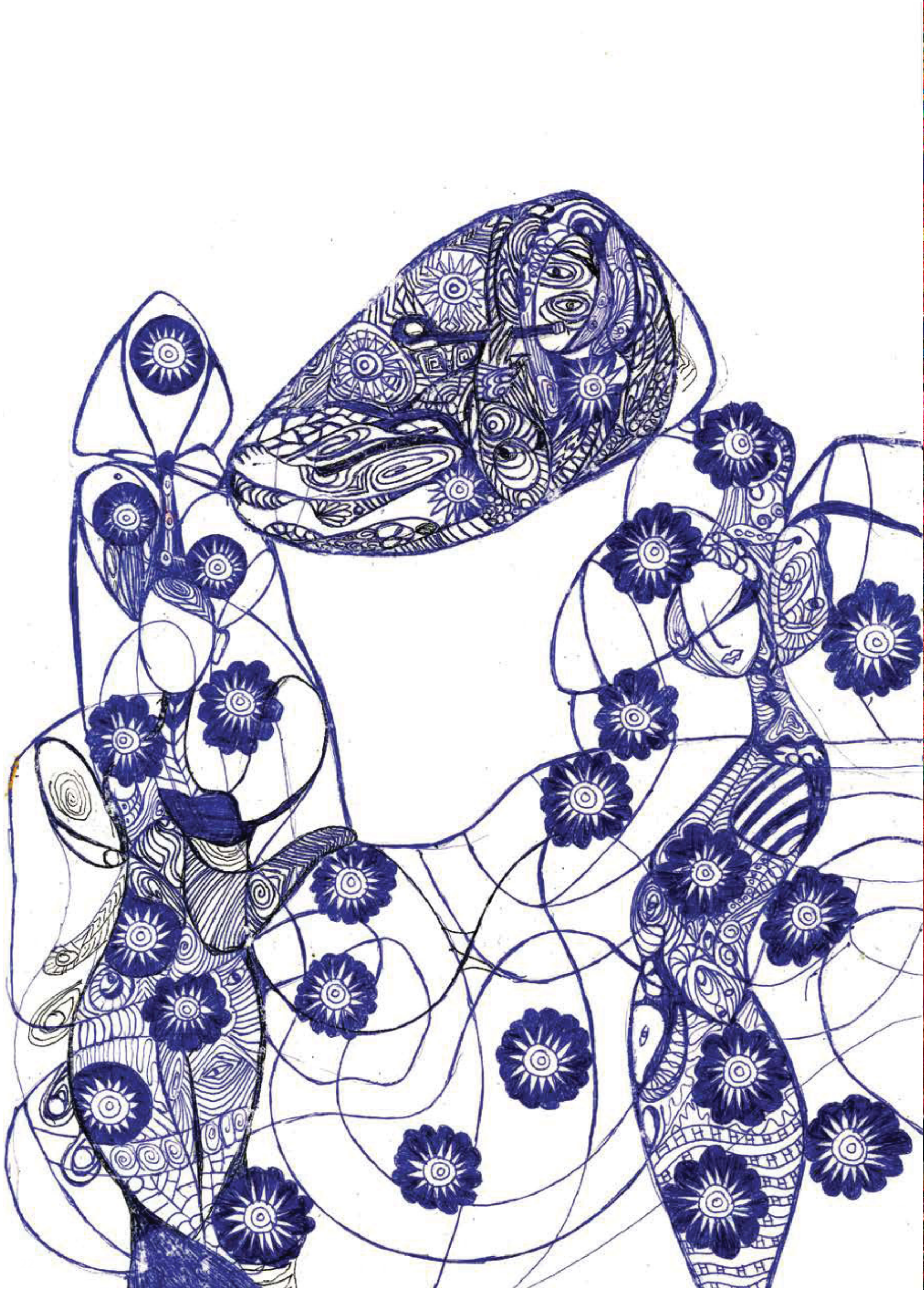


(ENG)

CACTUS ROCK BAND

CACTUS ROCK BAND - 06.10.2021
LACQUER 168 X120 CM

Continuing to draw inspiration from the natural world, "Cactus Rock Band" presents a more contemporary aesthetic than the other pieces in series No. 1. CAT employs a freeform approach to color and cubism, showcasing the beauty of nature even in barren and rugged landscapes. She beholds the hanging rocks, the cactus deserts bathed in the sun's rays, and perceives a sparkling beauty in their resilience. CAT suggests that when it comes to depicting the beauty of nature and its connection to humanity, perhaps it is best to simply observe with one's own eyes, rather than attempting to explain it.



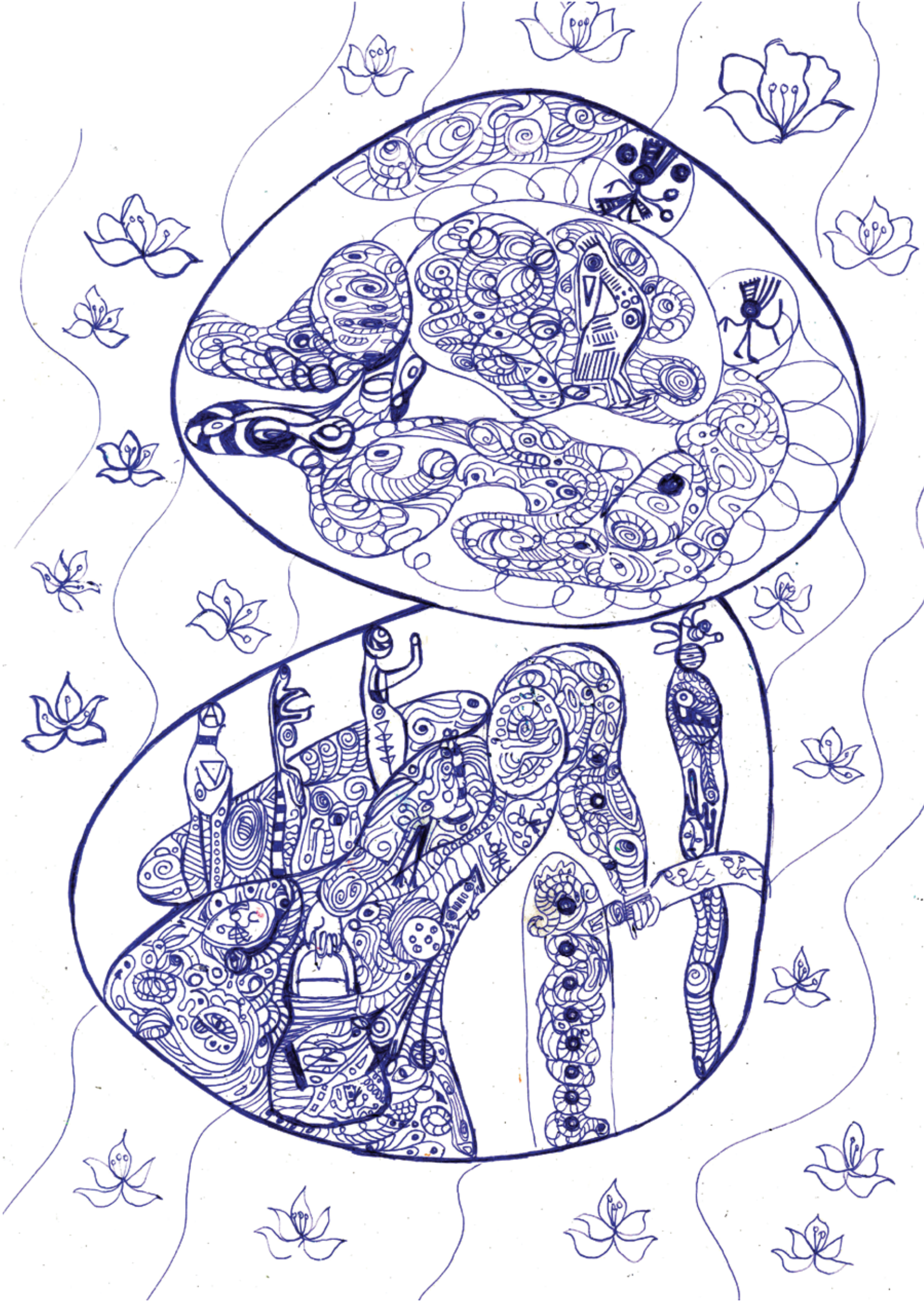
(ENG)

WHITE FLOWER MY MOTHER PLANTED

WHITE FLOWER MY MOTHER PLANTED - 13.10.2021
LACQUER 168 X120 CM

As we delve further into C&T's creative realm, we encounter the dreamlike "White Flower My Mother Planted."

This painting captures the artist's recollection of her mother planting white flowers in Gam Troi valley. In this state of free-flowing imagination, the artist allows herself to envision this serene landscape as a cosmic journey through alien worlds, spaceships, and dimensions, with symbols reminiscent of the ancient Dong Son culture of Vietnam, dating back some 4,000 years ago. She temporarily departs from reality and indulges in her wildest imagination, blending the boundaries between reality and dream in a state of boundless creative freedom.



(ENG)

ROLLING

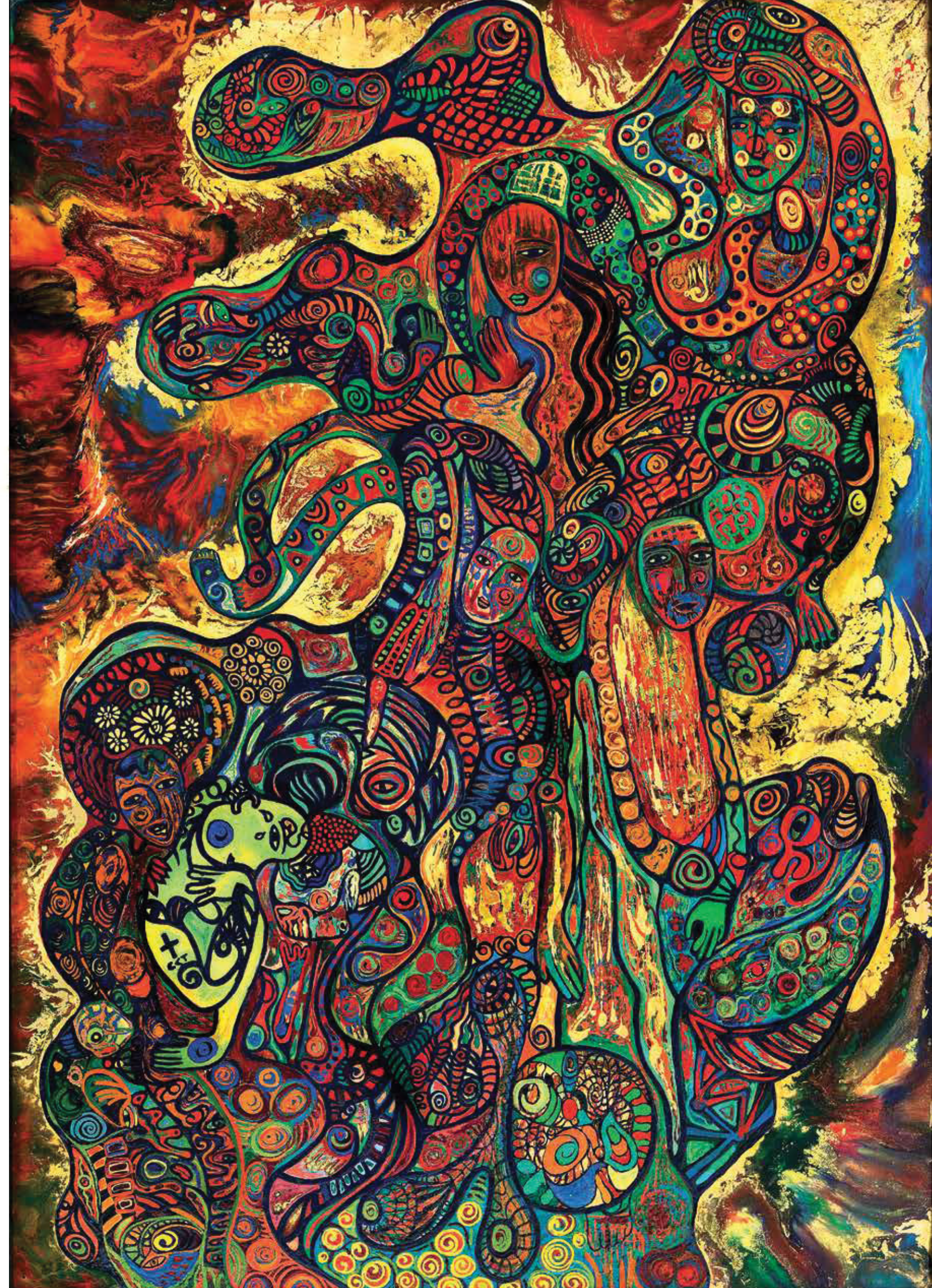
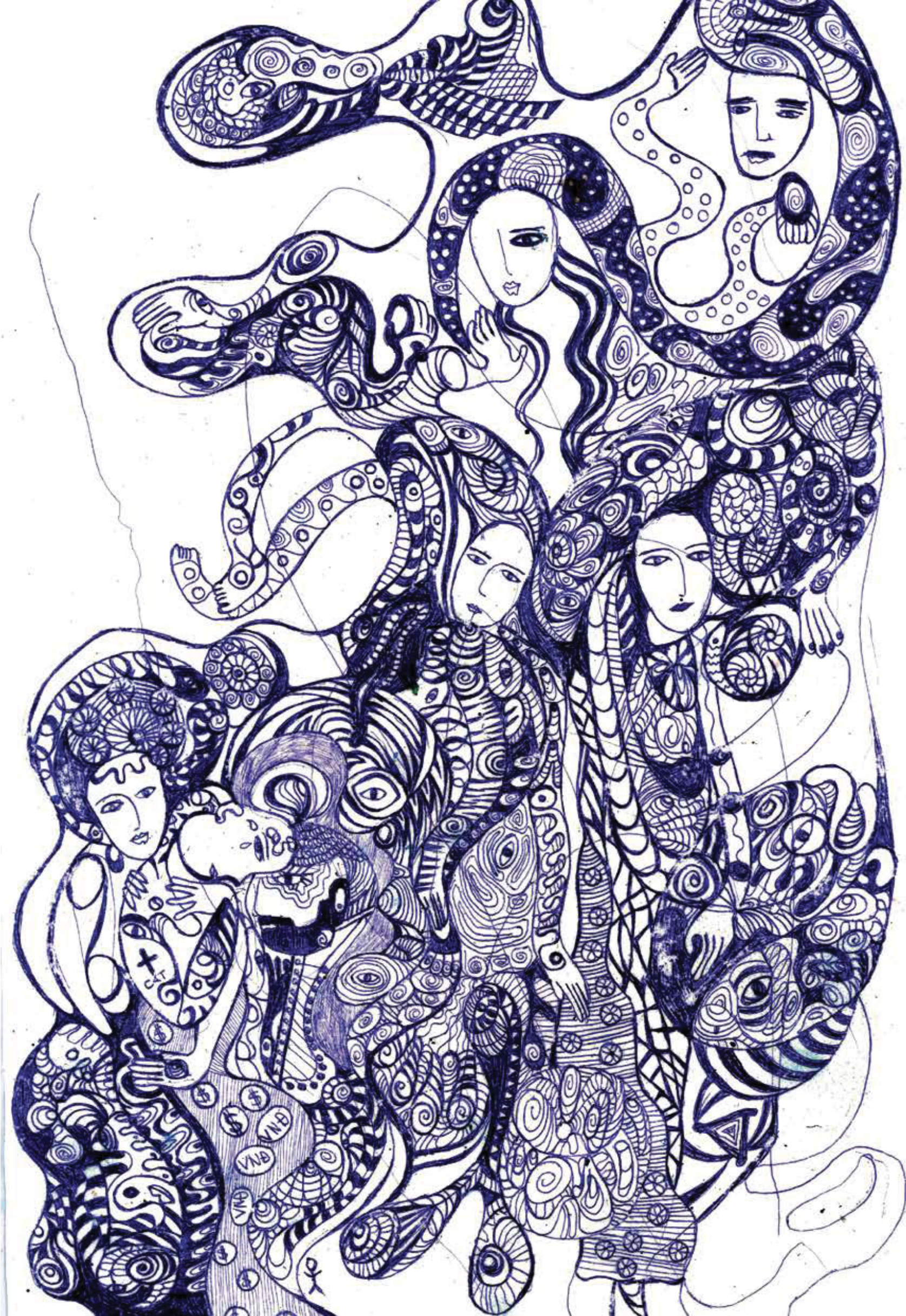
ROLLING - 17.10.2021
LACQUER 168 X120 CM

"Rolling" is a painting that evokes the sensation of constant motions, with its swirling and coiling lines that seem to curl into an endless spiral. At this point in her artistic journey, C<T began to depict and document the various moments of her life through her paintings, layering them upon one another like a cascading tempest.

However, amidst the chaos, it becomes apparent that C<T imbued her work with a sense of monochromatic simplicity, as if after all the tumultuous whirls of life, she had returned to her most authentic and pure essence.

Amidst the willow's delicate strands, the clouds are illuminated,
Ecstatic in the sweet aroma that fills the air
The willow flowers, with their many loving souls
Tears melt into the shadow of the moon.
Elegant garments adorn the festival scene
Earthly sins wash away in an instant
Forgive me, for my sentimental transgression.

ROLLING
Music & Poem composed by C<T



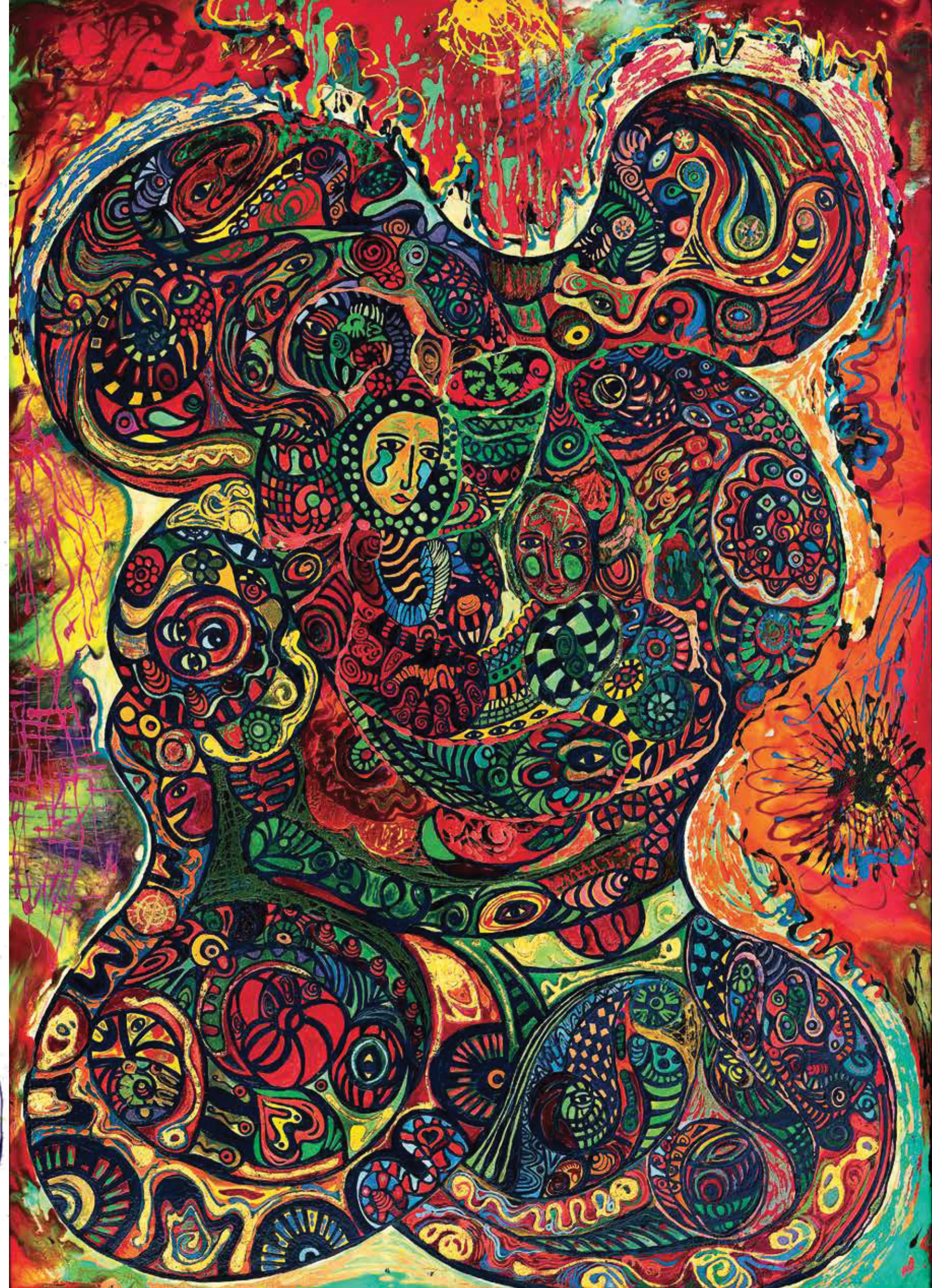
(ENG)

COLD

COLD - 27.10.2021
LACQUER 168 X120 CM

The "Cold" is a painting that is named in stark contrast to the image it depicts. The viewer is presented with the serenity of two figures embracing in a cozy and intimate setting, enveloped by the blanket of a dream. The artist, C<T, created this dreamlike work on a cold winter night while in the secluded mountains of Gam Troi valley.

The visuals evoke feelings of warmth and emotional connection, yet beneath the surface lies a subconscious message that is paradoxically icy and chilling.



(ENG)

ACID RAIN

ACID RAIN - 28.10.2021
LACQUER 168 X120 CM

"ACID RAIN" is a painting that reflects upon the introspective nature of C&T's journey. It captures a moment of contemplation amidst the cascading rain, in the thick night. The overwhelming sensation of the torrential rain, much like the struggles encountered in personal relationships and the quest for understanding human nature, left C&T feeling helpless and unable to see through the deluge. However, like the rain, time will provide answers for those who are patient and willing to wait.



(ENG)

ON TIME

ON TIME - 29.10.2021
LACQUER 168 X120 CM

"ON TIME" is a multi-layered painting that explores the concepts of space and time. As C&T delves deeper into these themes, she reflects on her own experiences tumbling through the different stages of life, learning costly lessons, and losing track of time. Each stage is depicted as a ray of light shining on the gears of a clock, reminding the artist of the valuable lessons she learned. Through this painting, C&T reminds herself to never rush and to stay in harmony with the rhythm of time, no matter how tumultuous life may seem.



(ENG)

CATGUT EMBEDDING

CATGUT EMBEDDING - 08.11.2021
LACQUER 168 X120 CM

"Catgut Embedding" is an emotive painting, a testament to C&T's resilience as a warrior in her personal journey. Not one to shy away from the darker aspects of her past, she bravely confronts them, using her art as a means of healing and self-discovery.

The white, floral-mottled surface of this painting serves as a memorial to the two people who helped her overcome her addiction to cigarettes, and reclaim her freedom of mind and body. This painting serves as a powerful reminder of the human capacity for self-discovery and triumph over adversity, and C&T's unwavering faith in the vitality of humanity. Facing problem and fix one by one.



(ENG)

MUSIC EVERYWHERE

MUSIC EVERYWHERE - 08.11.2021
LACQUER 168 X120 CM

Music serves as the conduit that allowed C&T to unveil her own universe. From the moment she discovered her ability to sing and create art, music and melodies have always been intimately intertwined with her compositions.

"Music Everywhere" is a representation of rhythms; as C&T believes there is a great harmony between visual art and music, constantly seeing and hearing one in the other.

Deeply influenced by her lover, a musician who helped her to unleash her latent talents, she sketched this piece as she watched him play with fervor, even while he was in the hospital. Throughout her artistic journey, music has always been her constant companion, aiding her in translating her emotions into her paintings in the most authentic way. Viewing C&T's paintings, we see her as someone who "sees" sound and "hears" color.



(ENG)

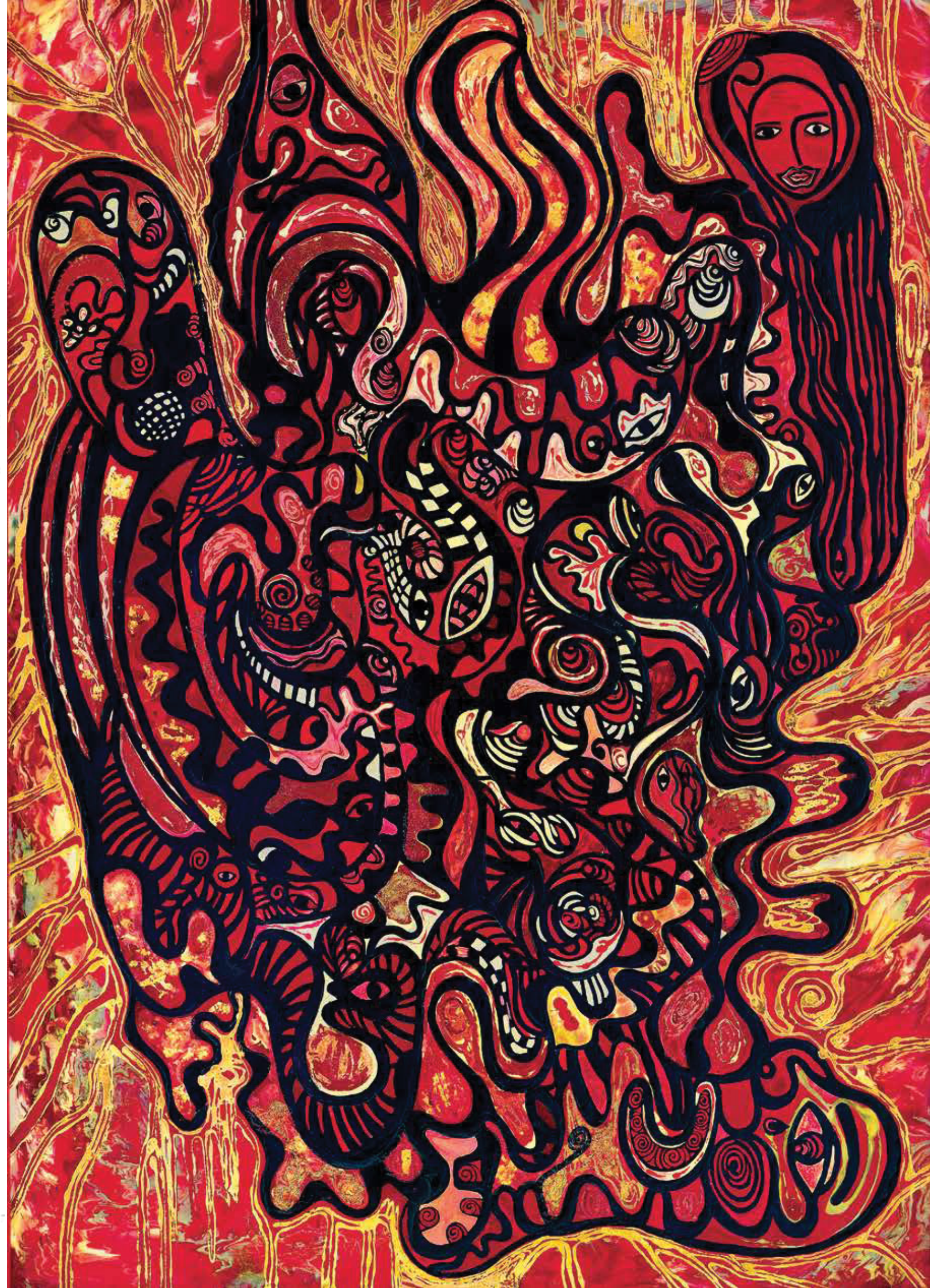
2\$ GAS TANK

2\$ GAS TANK - 25.11.2021
LACQUER 168 X120 CM

"2\$ gas tank" is a painting that captures the intense moment of C&T's journey through chapter one of METAREVERSE.

The painting is dominated by a molten red surface, evocative of angst and intensity, as if it were a fiery flame ready to consume the viewer.

However, amidst the fire, one can also discern shimmering golden currents, representing the valuable lessons that C&T learned during this difficult period. The painting is not just an expression of angst, but also one of hunger and thirst, represented by many gaping mouths depicted in the painting, appearing to be open, and ravenous.



(ENG)

POWER INSIDE

POWER INSIDE - 29.11.2021
LACQUER 168 X120 CM

"Power Inside" is a painting that showcases a more profound and subdued vision than the others in the series. It marks an important moment in C&T's realization that any external influences that do not come from the tangible world are weak energies that bind one to limitations.

The deeper she delves into self-exploration and reaches within, the more she believes in the strength of the subconscious as the key to unlocking her own power.



(ENG)

KIDZOONA

KIDZOONA - 06.12.2021
LACQUER 168 X120 CM

In "Kidzonna", one can sense an innate air of innocence and boundless vitality. This painting serves as a gift for C&T's son, for whom she holds an unconditional love. The painting was inspired by a warm and affectionate moment she shared with her child during an outing. For C&T, art and life are one and the same, and she imbues this perspective into her work.



(ENG)

EM BI REIMAGINED

EM BI REIMAGINED - 27.12.2021
LACQUER 168 X120 CM

Undoubtedly, "Em Bi reimagined" holds a prominent place in chapter one of METAREVERSE and in C<T's entire artistic journey.

Our subconscious and dreams are a true reflection of the human mind and its relationship to life, and C<T created this painting at a stage when she had nothing left to lose. This work serves as a mirror into her dreams, highlighting a desire for a new life that is full of vitality and beauty. She views this painting as a spiritual offspring, created at a time when she fully immersed her heart and life into the act of creating art.

Despite facing adversity, she remained resolute and persistent in creating with all the might and desire for life that the creator has bestowed upon us. When one deeply desires something, the universe conspires to turn it into reality. This painting represents C<T's longing for a free future that holds within it an extraordinary energy and motivation, driving her to be reborn and to continue on her journey in art, in life.



(ENG)

(VN)

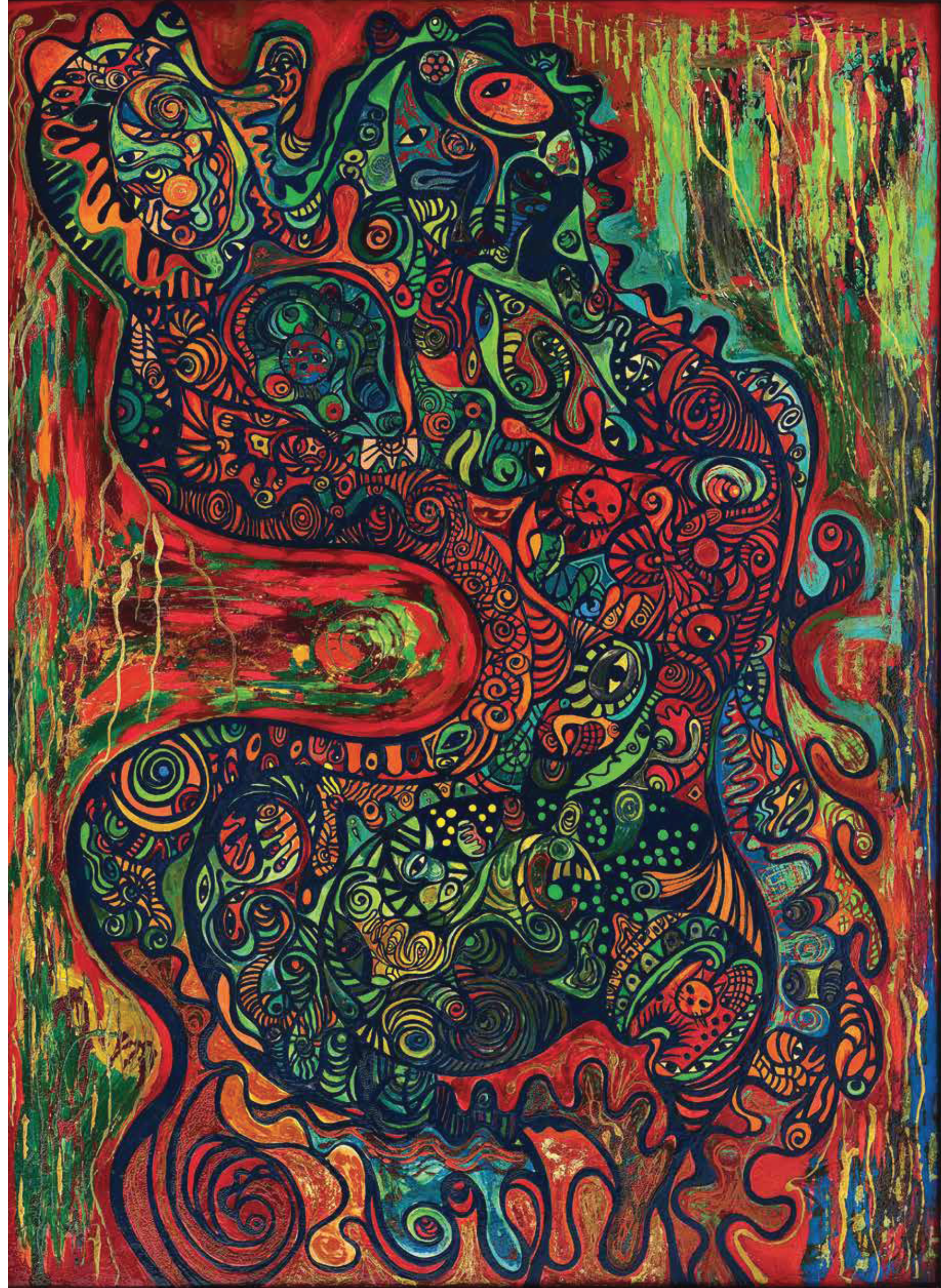
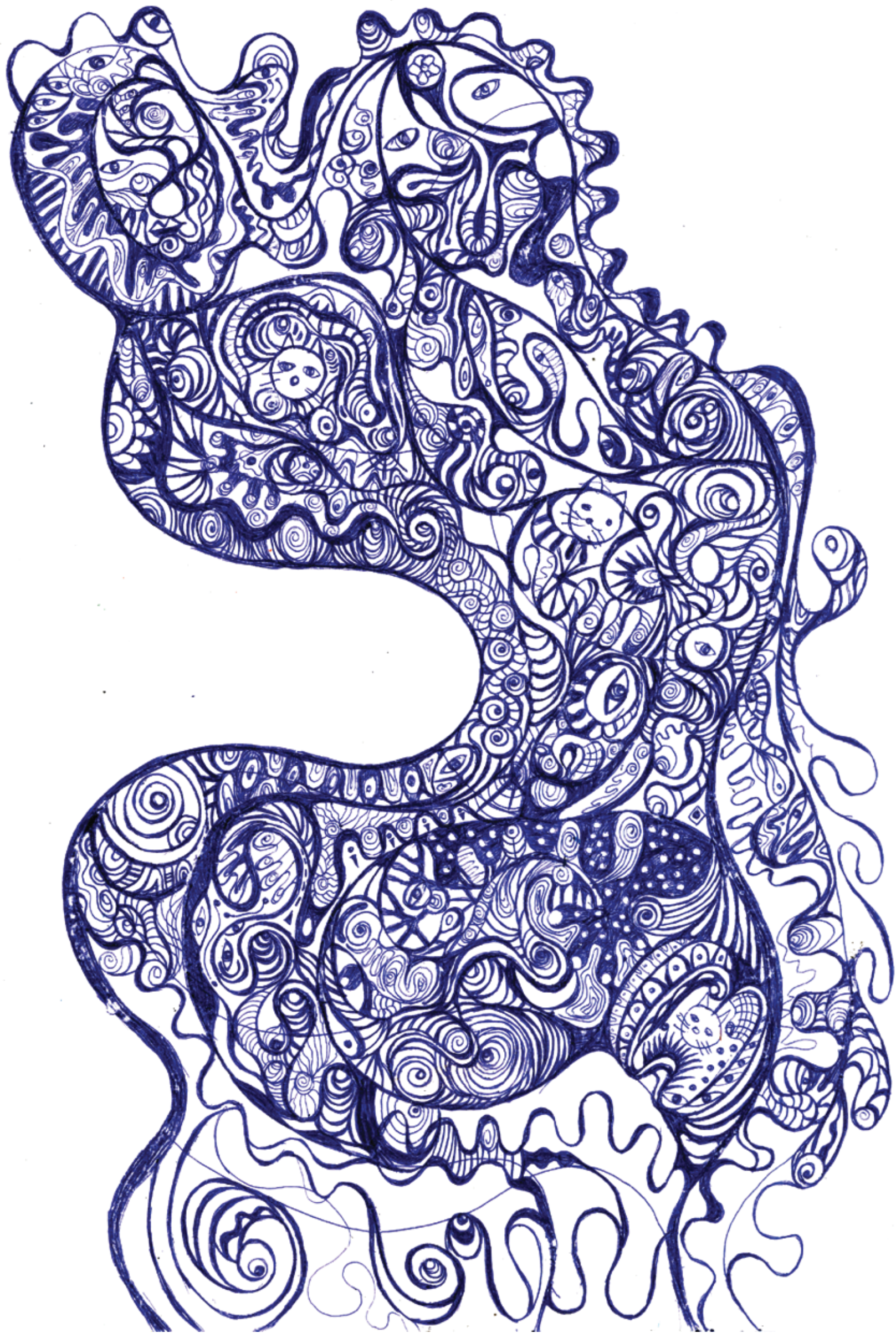
THE CAT MAN

THE CAT MAN - 02.01.2022
LACQUER 168 X120CM

"The Cat Man" is an exploration of the artist's emotional and relational turmoil stemming from the lover who inspired her entrance into the art world.

Through this work, she delves into the complexities of human love and the impact of modern life on our emotional experiences. The painting serves as a reflection on the fragility and impermanence of love. This realization was a source of enlightenment for C&T, as she found clarity in her own values.

The painting is a depiction of the artist's inner struggle, rendered in a tempestuous style. If the love for cats were to surpass the love for one's partner, what would you think?



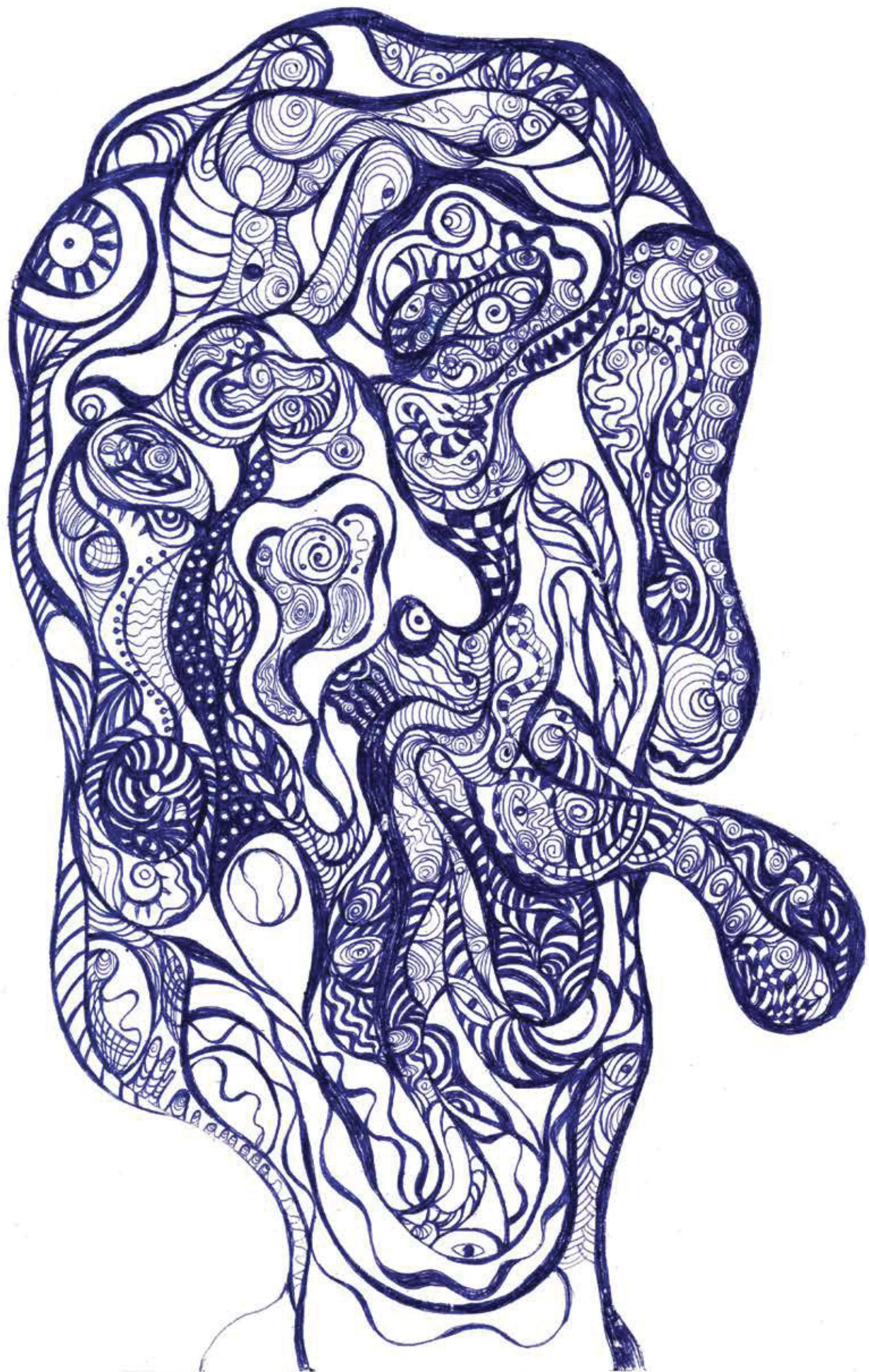
(ENG)

EX LOVER'S TONGUE

EX LOVER 'S TONGUE - 10.01.2022
LACQUER 168X120 CM

"Ex-Lover's Tongue" serves as the culminating work of chapter one and marks the end of a transformational journey, that ultimately led C&T to the art world.

Broken, and in her darkest moment, allowed her eyes to open widest. And only then, could she see the light forward. It ignited within her an extraordinary, self-sustaining energy, allowing a rebirth, full of life. A tumultuous explosion of both beginnings and endings, marking a new chapter in C&T's quest to create her own world, and reshape her life in her own image. It was the day she began her second series, penning title, "The Healing Journey".



SHORT BIO

C<T was born into a family of artists in Hanoi in 1989. Her mother, a renowned lacquer painter, and her father, a prominent Vietnamese performance artist and painter. They instilled in her a love for the arts from a young age. However, for 31 years of her life, C<T devoted herself to the study and practice of finance in various countries such as the United States, Australia, and Japan, never considering a career in the arts.

On her 32nd birthday, a near-death experience would have a profound effect on the young businesswoman, shaking her to the core. Within the following six months, she completed 20 paintings with a ballpoint pen on paper, and within a year, had created 22 large-scale lacquer paintings. Many accompanied by a poem, and original song. The volume of work produced in such a short time-frame, is astounding.

However, producing a large volume of work with artistic excellency in this short period, can only be described by her as due to a powerful process of rebirth, brought on by surviving a near-death. This book explores C<T's first series, METAREVERSE. Containing her original work, in both lacquer art, and poetry. Exposed for the first time, to an international audience.





CONTACT
FOR MORE INFORMATION

catherinedao1808@gmail.com
(+84) 769 872 290

SPECIAL THANKS TO OUR TALENTED TEAM
FOR THEIR EXCEPTIONAL WORK



EDITOR—THUY ANH DANG
ART DIRECTION—NGO LINH PHUONG
TRANSLATOR—ROBERT COSSAK
GRAPHIC DESIGNER—LIFU

PHOTOGRAPHER—TUANTI
STYLIST—MEGABLONDED
M.U.A—ANNGUYEN

PRODUCED IN HANOI, VIETNAM